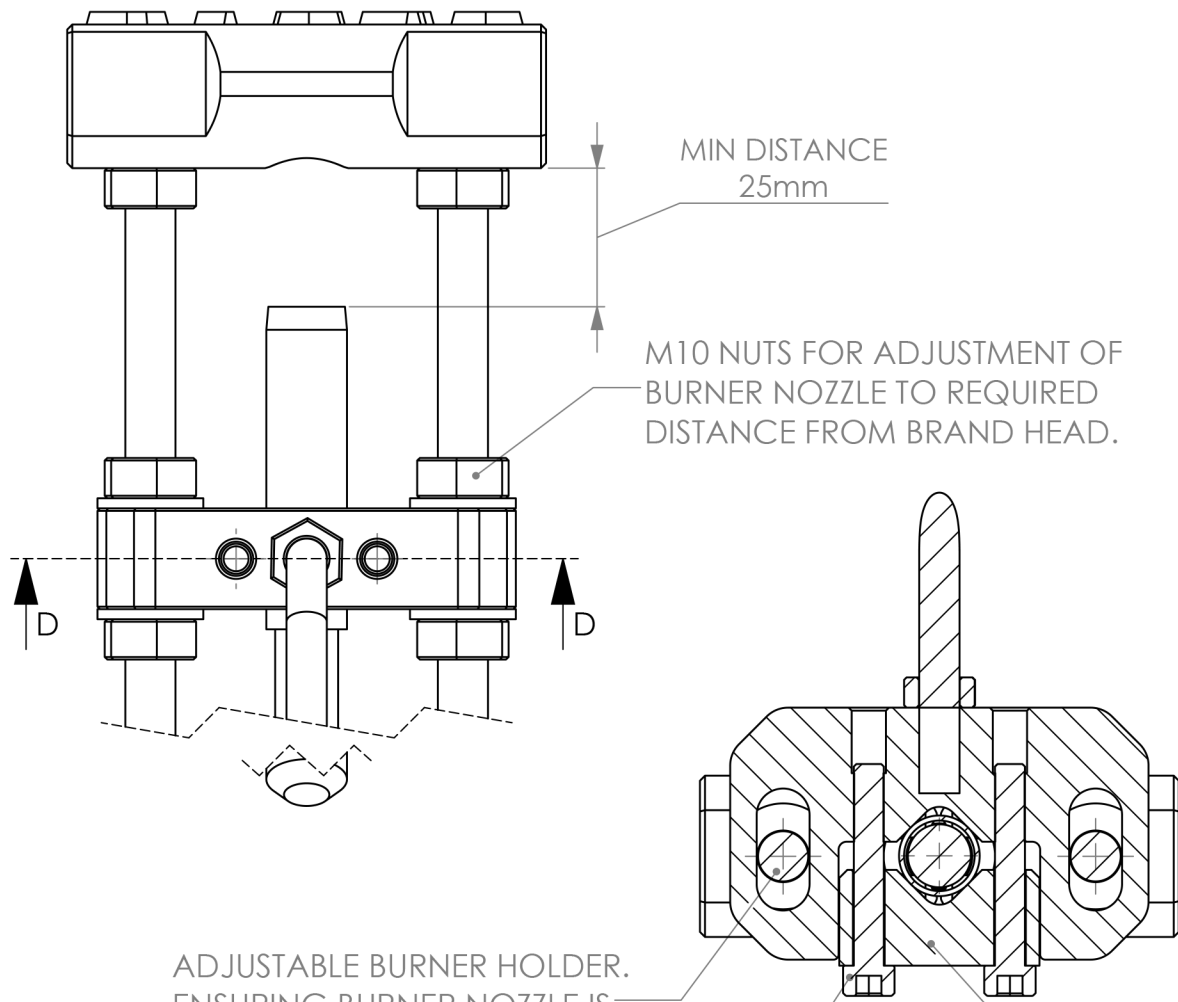
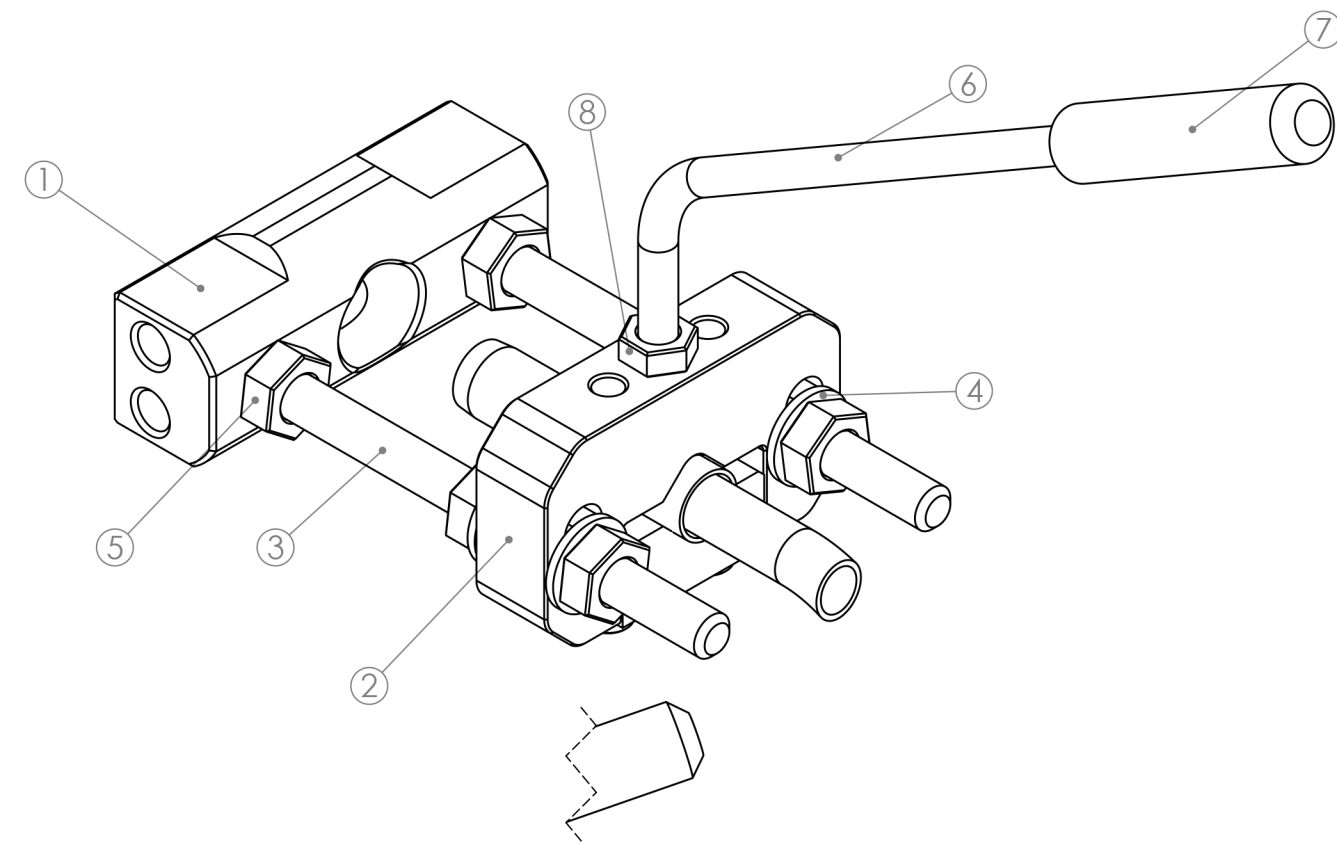


ITEM NO.	PART NAME	NOTES	MATERIAL	QTY.
1	BRANDING HEAD		303 STAINLESS	1
2	TORCH HOLDER		6061 ALUMINIUM	1
3	M10 STUD THREADED		304 STAINLESS	2
4	M10 WASHER		304 STAINLESS	4
5	M10 NUT	10 Nm	304 STAINLESS	6
6	HANDLE ROD		303 STAINLESS	1
7	HANDLE		6060 ALUMINIUM	1
8	M8 NUT	8 Nm	304 STAINLESS	1
9	CLAMP PLATE		6060 ALUMINIUM	1
10	M6 CAP SCREW	MAX TORQUE - 3 Nm	304 STAINLESS	2
11	BURNER NOZZLE - NOT SUPPLIED			1



M10 NUTS FOR ADJUSTMENT OF BURNER NOZZLE TO REQUIRED DISTANCE FROM BRAND HEAD.

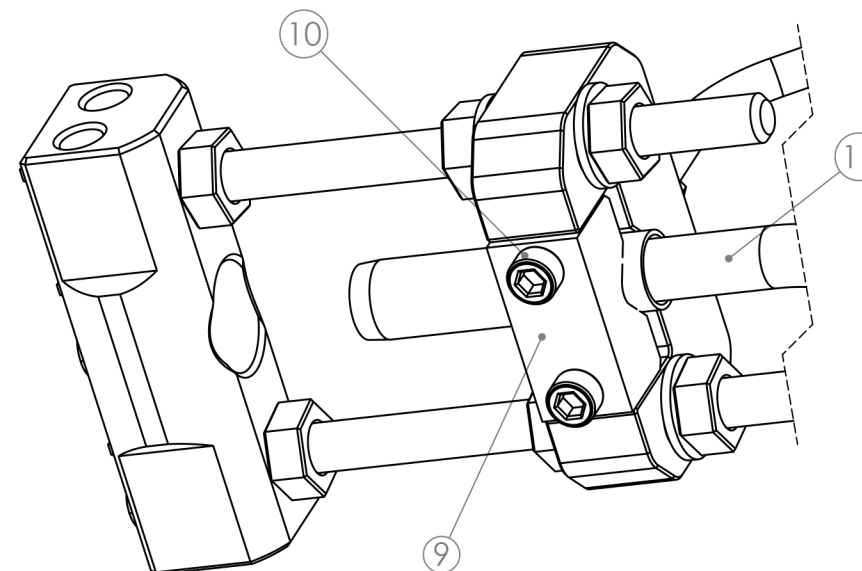
MIN DISTANCE 25mm

ADJUSTABLE BURNER HOLDER. ENSURING BURNER NOZZLE IS CENTERED ON BRAND HEAD

MAX TORQUE 3 Nm. ENSURE BURNER NOZZLE SHOWS NO SIGN OF DEFLECTION AFTER CLAMPING

SECTION D-D SCALE 1 : 1.5

ADJUSTABLE CLAMP RANGE ON BURNER NOZZLE DIA 8mm - Dia 20.0mm (FOR 8mm RANGE ORIENTATE CLAMP PLATE (ITEM 9) TO USE FLAT FACE)



Important notes and warnings

- For outdoor use only
- Ensure branding unit is assembled and used as per instructions provided
- Always wear suitable heat proof gloves.
- Always wear eye protection
- Ensure no district fire bans are in place at time of use
- Use handle provided to carry, support and push branding unit during operation.
- Never attempt to use products or any components that have been damaged or exposed to an accidental fire.
- The branding head will hold heat for a considerable time. Ensure it is placed somewhere secure and safe while cooling down
- Follow all manufactures guidelines and warning for gas products used in conjunction with this unit.
- Ensure M6 'burner nozzle' clamp plate screws (item 10) are not tightened beyond stated torque level (3Nm). Ensure burner nozzle shows no signs of deflection after clamping.
- Keep any hoses used away from heat sources



ECROTEK
Keeping ahead